



**CBHC Request for Proposals (RFP)
Informational Meetings
Nov. 29 & 30 and Dec. 5 & 7, 2011**



Children's Board
HILLSBOROUGH COUNTY
Dreams Worth Growing

Meeting Purpose

- Review Request for Proposals (RFP) Application Process
 - Important Dates
 - Required Elements
- Review Request for Proposals (RFP) Webpage
www.childrensboard.org/rfp.aspx
(or click “RFP” from the CBHC homepage)
- CBHC Request for Proposals (RFP) Partners Sessions / Notecards
- Additional questions directed to
rfp2012@childrensboard.org

What is the Children's Board?

- Special taxing district under Florida statute, established by voters in 1988
- Provides funding to over 90 programs for children and families
- Costs average homeowner \$4 per month
- FY12 budget is \$34M; funding for programs is approximately \$26.7M



Children's Board
HILLSBOROUGH COUNTY

Dreams Worth Growing

Rationale for Children's Board RFP

Greater Impact with Less Revenue

- Revenue losses = re-direction for impact (no new \$\$\$)
- “begin with the end in mind”
- Anchor services funding to what works
- Engage other funding partners

Level the Playing Field and Align Rapidly

- Select the best grantees via a competitive process
- Align \$\$ to pregnant women and children birth to age 8 and their families (focus established in 2002)
- Align \$\$ to desired results
- Answer: “Is anyone better off?”

Important Dates

- **RFP Release Date: Nov. 22, 2011**
 - Notice of RFP – Tampa Tribune, St. Pete Times, La Gaceta, and the Florida Sentinel Bulletin
- **RFP Informational Sessions (only attend one)**
 - Nov. 29, 2-4:30 pm @ CBHC
 - Nov. 30, 9-11:30 am @ CBHC
 - Dec. 5, 1:30-4 pm @ Bloomingdale Library
 - Dec. 7, 1:30-4 pm @ Town 'N Country Library
- **Letter of Intent to Apply: Due Dec. 15, 2011**
- **Deadline to Submit Proposals: Feb. 17, 2012 at 4pm (by CBHC Lobby Clock) — NO EXCEPTIONS**

Section I: Introduction

- A. Background
- B. Purpose of this Request For Proposals (RFP)
- C. Funding Categories and Amounts Available
- D. Partnerships and Collaboration
- E. Neighborhood-Based Initiatives
- F. Risk Factors and Priority Populations
- G. RFP Funding Categories, Results, Indicators and Service Delivery Strategies
- H. Eligible Respondents
- I. Funding Award Requirements
- J. Application Review Process

School District of Hillsborough County

To work with local elementary
schools
please contact:

Gwen Luney
(813) 272-4879
gwen.luney@sdhc.k12.fl.us

Funding Categories and Amounts Available

Neighborhood-based – up to \$8 M Available					
RFP Result Area	Healthy Children/ Developmentally on Track – up to 45% or \$3.6 M	School Readiness/ Early School Success – up to 45% or \$3.6 M	Family Strengthening – up to 20% or \$1.6 M	Multiple Categories (2 or more) Collaboration	Multiple Categories (2 or more) Single Provider
Maximum Funding Level	\$3.6 M possible over 3-5 neighborhoods (if 5 neighborhoods, up to \$700,000 per)	\$3.6 M possible over 3-5 neighborhoods (if 5 neighborhoods up to \$700,000 per)	\$1.6 M possible over 3-5 neighborhood (if 5 neighborhoods up to \$300,000 per)	\$8 M possible over 3-5 neighborhoods (if 5 neighborhoods, up to \$1.6 M per)	\$8 M possible over 3-5 neighborhoods (if 5 neighborhoods up to \$1.6 M per)
Typical Award	\$250,000	\$250,000	\$125,000	\$ 500,000	\$ 500,000
County-wide – up to \$14 M Available					
RFP Result Area	Healthy Children/ Developmentally on Track – up to 45% or \$6.3 M	School Readiness/ Early School Success – up to 45% or \$6.3 M	Family Strengthening – up to 20% or \$2.8 M	Multiple Categories (2 or more) Collaboration	Multiple Categories (2 or more) Single Provider
Maximum Funding Level	\$6.3 M possible	\$6.3 M possible	\$2.8 M possible	\$14 M possible	\$14 M possible
Typical Award	\$1.5 M	\$2.5 M	\$500,000	\$3.5 M	\$1 M

Section II: Application Timeline and Submission

A. RFP Timetable with Important Dates

B. Informational Meetings (optional)

C. Application Steps

1. Letter of Intent to Apply by Dec. 15, 2011 to rfp2012@childrensboard.org
2. Written questions through Jan. 6, 2012
3. Applications due to CBHC on or before **Feb. 17, 2012 by 4:00 pm**

Letter of Intent to Apply

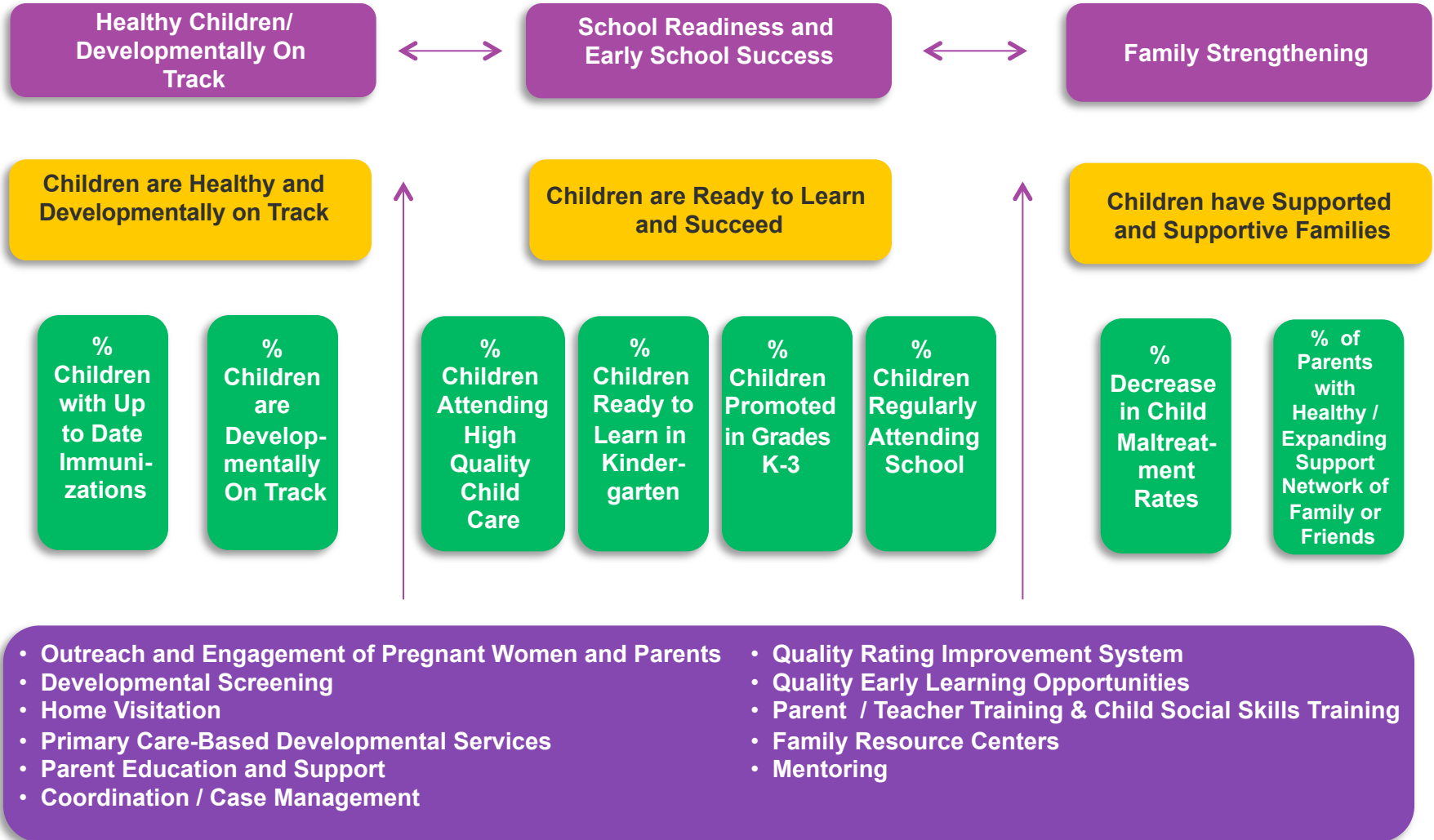
- Letter of Intent to Apply template (Attachment 5) can be downloaded from the CBHC website www.childrensboard.org
- It is non-binding and optional
- Complete one for each application you intend to submit
- Due on Dec. 15, 2011 by 4:00 p.m. at CBHC
- Email to: rfp2012@childrensboard.org

Section III: Overview of Results, Indicators and Service Delivery Strategies

- A. Summary of RFP Funding Categories, Results, Indicators and Service Delivery Strategies
- B. Promotion and Prevention Definitions
- C. Evidence-Based, Research-Based, General Practices Expected (Refer to Attachments 1 & 2)

RFP Funding Categories, Results, Indicators and Service Delivery Strategies

RFP
CATEGORY
RESULT
INDICATOR
STRATEGY



Section IV: RFP Category, Result Areas, Rationale and Requirements

- A. RFP Category: Healthy Children/
Developmentally on Track
- B. RFP Category: School Readiness/
Early School Success
- C. RFP Category: Family Strengthening

**Very Important, See Attachment 4:
RFP Measures Table**

Result Area: Children are Healthy & Developmentally on Track

Applications are expected to address all REQUIRED Quantity, Quality & Performance Measures.

Indicator	REQUIRED Performance Measures (ALL)
% Children Healthy	<ol style="list-style-type: none">1. #/% of Babies Born at Appropriate Birth Weight2. #/% of Full Term Births3. #/% of Children with Decreased Vulnerability to Contracting Vaccine-Preventable Diseases4. #/% of Children with Good to Excellent Health Status5. #/% of Children at Healthy Height / Weight
% of Children are Developmentally On Track	<ol style="list-style-type: none">1. #/% of Children at Healthy Height / Weight2. #/% of Children Referred for Services who Show Improvement on Re-Assessment3. #/% of Parents Involved with their Child's Development4. #/% of Parents Demonstrating Behavior Consistent with Knowledge of Age-Appropriate Child Development and Expectations

Result Area: Children are Ready to Learn and Succeed

Applications are expected to address all REQUIRED Quantity, Quality & Performance Measures.

Indicator	REQUIRED Performance Measures (ALL)
% Children attending High Quality Child Care	<ol style="list-style-type: none"> 1. #/% of Child Care Facilities with at Least a 3 Star Rating 2. #/% of Staff Demonstrating Developmentally Appropriate Teaching Practices (e.g., Positive Classroom Management, Positive Adult / Child Interactions, Curriculum Instruction with Literacy, Effective Family Engagement, etc.)
% Children Ready to Learn in Kindergarten	<ol style="list-style-type: none"> 1. #/% of Children Screened Ready for Kindergarten 2. #/% of Parent's Involved in Child's Education 3. #/% of Children Promoted from Kindergarten 4. #/% of Children Regularly Attending Kindergarten
% Children Promoted in Grades 1-3	<ol style="list-style-type: none"> 1. #/% of Children with On-Time Promotion in Grades 1-3 2. #/% of Children Regularly Attending School 3. #/% of Parents Involved in Child's Education
% Children Regularly Attending School	<ol style="list-style-type: none"> 1. #/% of Children Regularly Attending School 2. #/% Parents Involved in Child's Education 3. #/% of Children with Decreased Tardiness at School

Result Area: Children have Supported and Supportive Families

Applications are expected to address all REQUIRED Quantity, Quality & Performance Measures.

Indicator	REQUIRED Performance Measures (ALL)
% Decrease in Child Maltreatment Rates	<ol style="list-style-type: none"> 1. #/% of Parents Demonstrating Positive Parent / Child or Family Interactions (No reported Child Maltreatment) 2. #/% of Parents with Increased Social Supports 3. #/% of Parents Involved with Child's Development, Education and/or School 4. #/% of Parents Demonstrating Behavior Consistent with Knowledge of Age-Appropriate Child Development and Expectations 5. #/ % of Referred Children / Families Linked to Services
% of Parents with Healthy / Expanding Network of Families and Friends	<ol style="list-style-type: none"> 1. #/% of Parents with Increased Social Supports 2. #/% of Parents Reporting Reduced Stress 3. #/% of Families with Improved Family Well-Being 4. #/% of Referred Children / Families Linked to Services

Section V: Service Delivery Strategies

- A. Outreach and Engagement of Pregnant Women and Parents
- B. Parent Education and Support
- C. Developmental Screening
- D. Primary Care-Based Health and Developmental Services
- E. Home Visitation
- F. Coordination / Case Management
- G. Family Resource Centers
- H. Quality Early Learning Opportunities
- I. Quality Rating Improvement System
- J. Parent/ Teacher Training and Child Social Skills Training
- K. Mentoring

Section VI: General Information

- A. Data Reporting and Data Exchange
- B. Service Dates: Oct. 1, 2012 – Sept. 30, 2013
- C. Fiscal Soundness
- D. Pre-Contractual Agreement Expenses
- E. Acceptance of Contractual Terms (Attachment 10)
- F. Restricted Communication - Cone of Silence
- G. Background Screening Requirements
- H. Ownership of Application
- I. Appeal Process (Attachment 3)
- J. Postponement or Cancellation

Section VII: Application Instructions, Required Format and Required Content

- A. Submission Instructions and Format
- B. Application Cover Sheet (Attachment 6)
- C. Table of Contents
- D. Application Narrative (40 page limit)
- E. Budget and Budget Narrative
(Attachment 7)

Application Narrative

Section 1. Agency Organizational Profile

Sub-section 1A. Agency Past Experience and Capacity

Sub-section 1B. Organization Structure and Governance

Sub-section 1C. Financial Capabilities

Section 2. Programmatic Narrative

Sub-section 2A. Target Population

Sub-section 2B. Program Design, Implementation Plan,
Community Engagement

Sub-section 2C. Data Collection and Evaluation

Section 3. Budget and Budget Narrative

Sub-section 3A. Budget

Sub-section 3B. Budget Narrative

RFP Resources: Attachments 1-14

1. Links and Resources About Evidence-Based Programs
2. Data, Maps, and Supporting Documentation (Examples)
3. Children's Board Funding Appeal Policy
- 4. RFP Measures Table**
5. Letter of Intent to Apply
6. Application Cover Sheet
7. Budget Forms
8. RFP Rating Criteria
- 9. Minimum Requirements**
10. Contract General Terms and Conditions
11. Glossary of Terms
12. Children's Board ASO for Flexible Funds
- 13. RFP Application Checklist**
14. Works Cited in RFP

Additional RFP Resources at www.childrensboard.org

Additional RFP Resources on the web:

- Community Input to 2020 Strategic Plan
- Results-Based Accountability (RBA)
- CBHC Place-Based Initiatives
- Hillsborough County Statistics “at a glance”
- Community Atlas link
- Theory of Change link
- Business Planning/Sustainability links
- Examples of Innovative Funding Scenarios

Options for Collaboration

- Complete a **pink** note card with:
 - ✓ Agency/Organization name
 - ✓ Key contact
 - ✓ Contact email and phone
 - ✓ Brief description of expertise
- Will post on website

CBHC RFP Partners Sessions

Friday, December 2, 2011

10:00 a.m. to Noon

and

Tuesday, December 13, 2011

10:00 a.m. to Noon

at

Children's Board of Hillsborough County

Please register via the [CBHC RFP webpage](#)

Notecard Questions & Answers

Please send any future questions to

rfp2012@childrensboard.org

no later than Jan. 6, 2012

Thank you!