



# Provider Forum October 22, 2010



Children's Board  
HILLSBOROUGH COUNTY

Dreams Worth Growing

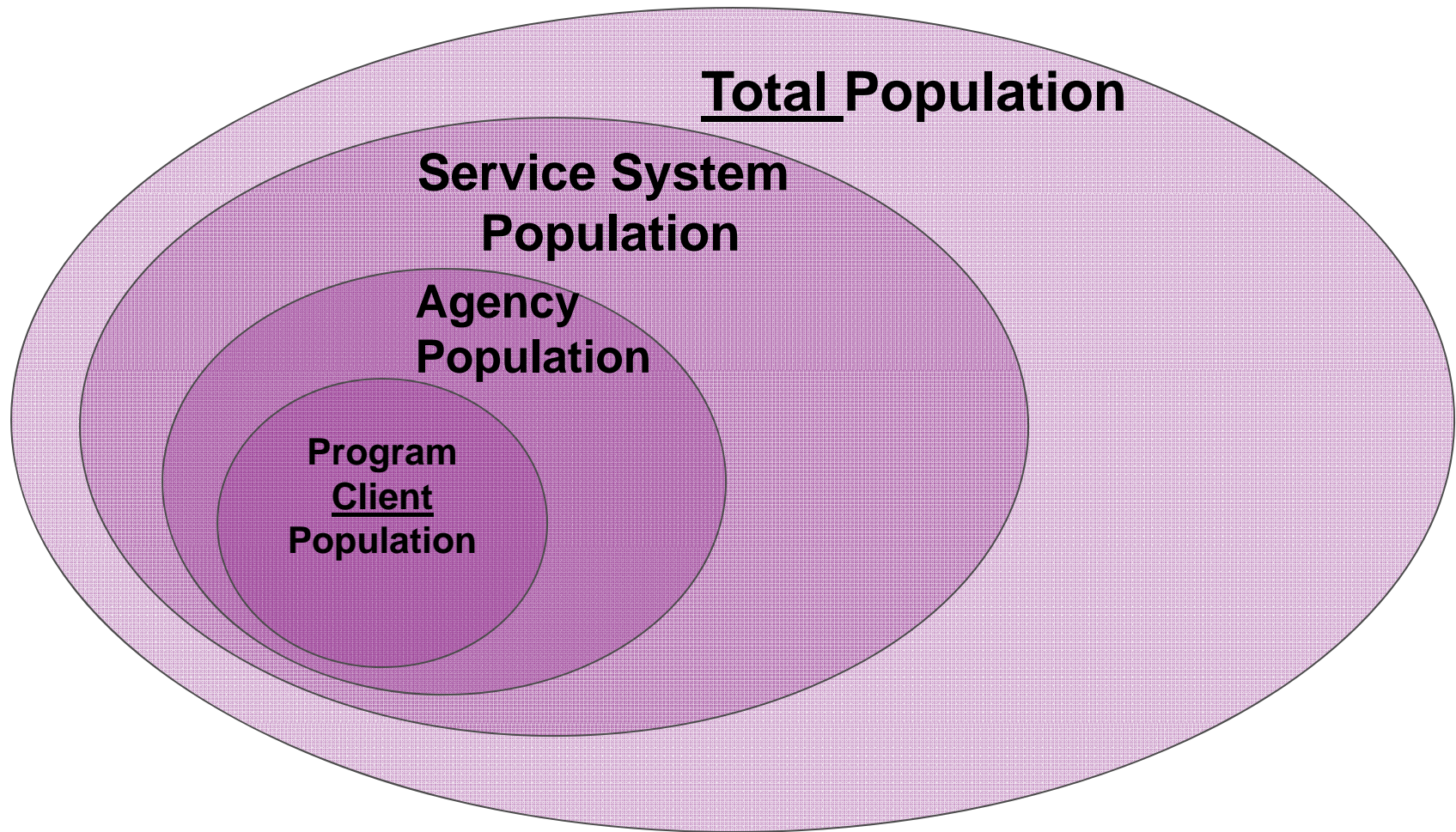
# AGENDA

- Accomplishments and Challenges in 2010
- What's ahead for 2011?
- Conversation and Discussion by Table



# Results-Based Accountability

# A View of the Relationship between Accountability Levels



# Results Based Accountability

**How much  
did we do?**

**How well did  
we do it?**

**Is anyone better off?**

# Definitions

▪ **Result or Outcome** a condition of well being for children, families, or communities.

Healthy children, Children succeeding in school, Clean Environment  
Safe communities Prosperous Economy

▪ **Indicator or Benchmark** a measure which helps quantify the achievement of a result.

Rate of low-birth weight babies Rate of high school graduation  
Crime rate, Air quality index, Unemployment rate

▪ **Strategy** a collection of actions to improve results and best thinking about what works

Health, nutrition and support for young women, Tutoring and mentoring,  
Neighborhood watch, Streetlights, Regulating environmental toxicants,  
Earned income tax credits, Childcare subsidies



## Accomplishments and Challenges in 2010

# Accomplishments and Challenges in 2010

- Focus on Results and Accountability
- Return on Investment/ Revenue Maximization  
Results
- Legislative Changes for CSCs
- CBHC Staff Realignment



**Return on Investment**

# Resource Development

<b>Grants</b> 21 <sup>st</sup> Century Learning Centers – after school	\$3.1 million over 5 years
<b>Partnership Cost Savings</b> Child Care Licensing Out-of-School	\$750K (OST) & \$200K (CCL) requested  CBHC funded \$505K one-time and \$250K ongoing via ELC to generate \$1:\$1 match to support OST and CCL
<b>Revenue Maximization Opportunities</b> Medicaid Title IV-E TANF	\$1,157,873 \$ 237,896 \$ 771,112
<b>New Match Funding</b>	CBHC provided \$41,500 in match to generate \$76,000. \$1.80 for every dollar invested
<b>Technical Assistance</b>	\$358,156
<b>Social Enterprise</b>	Earned income ventures ranging from \$0 to over a million dollars!



# Legislative Changes for CSCs

## SB 2014 - effective date 7-1-10

Amends Florida Statutes section 125.901:

- The governing body of the county shall submit the question of retention or dissolution of a district with voter-approved taxing authority to the electorate in the general election according to the following schedule:
- For a district in existence on July 1, 2010, and serving a county with a population of more than 400,000 but fewer than 2 million persons as of 2016.

## SB 2014 continued

The governing board of the district may specify, and submit to the governing body of the county no later than nine months before the scheduled election, that the district **is not subsequently subject to reauthorization** or may specify the number of years for which a reauthorization under this paragraph shall remain effective.

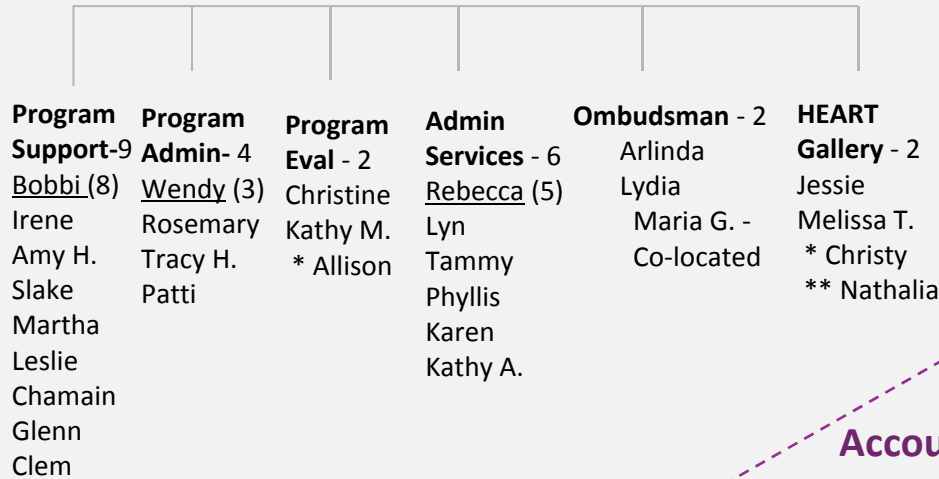
## SB 2014 cont.

The governing board of the district **may recommend** to the governing body of the county **language** for the question submitted to the electorate.

**Nothing ...precludes the governing board of a district from requesting** that the governing body of the county submit the question of retention or dissolution of a district with voter-approved taxing authority to the electorate **at a date earlier than the year prescribed**

# Strategic Focus

**Programs – 26**  
Amy P. (9)



**Communications - 5**

Carolyn (4)  
 Rick  
 Dan  
 Pat  
 Polly

**Agency Consultants - 2**

Health System of Care  
 National Funding Collaborative - 1  
 Peter  
 Systems Development  
 Revenue Maximization - 1  
 Don

# Business Supports

**Accounting - 6**

Tonia (5)  
 Steve  
 Tom  
 Maggie  
 Edda  
 Curt

**OD - 19**

Laurie (3)

Buddy  
 \*Herb

**Learning**

Trish (8)  
 Sharon  
 Veronica  
 \* Diane  
 \*\* Kelly

**Quality / Technology**

Marc (6)  
 Madelyn  
 Jennifer  
 Stan  
 Angie  
 John  
 Brian

**CEO - 3**

Luanne (8)

**Exec. Office**  
 Yolanda  
 Amy P  
 Don  
 Peter  
 Carolyn  
 Tonia  
 Laurie

**Conf. Center Facilities**

Patrick  
 Oscar  
 Dino  
 Tarah  
 \* Michael  
 \* Vicki

**FSRC Library**

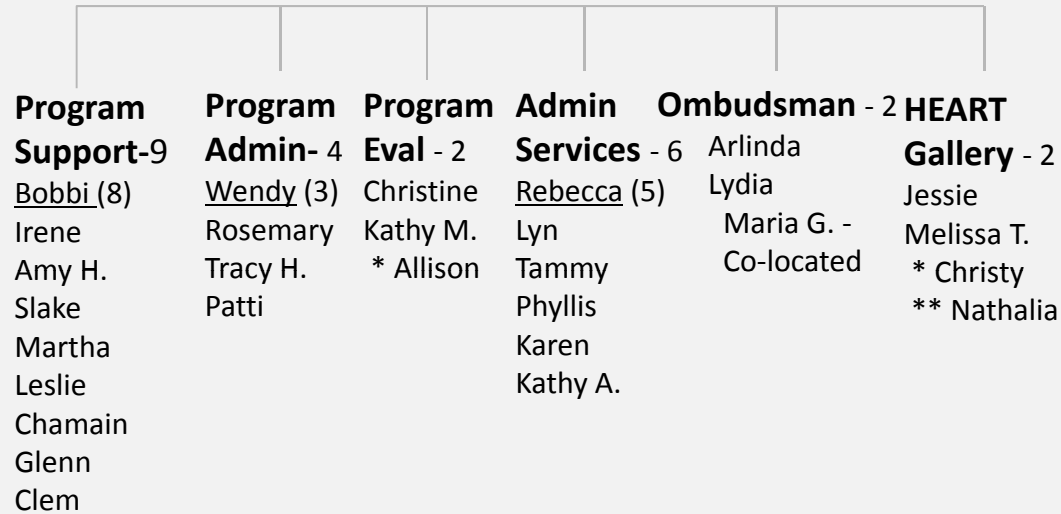
Marci  
 Brenda  
 \* Diane  
 \* Greyling

61 FTE  
 ( ) # supervised  
 Underlined is supervisor  
 \* part time  
 \*\* contract  
 Co-located

## Strategic Focus

Programs – 26

Amy P. (9)



**Communications - 5**

Carolyn (4)

Rick  
Dan  
Pat  
Polly

**Agency Consultants - 2**

**Health System of Care**  
**National Funding Collaborative - 1**  
Peter

**Systems Development**  
**Revenue Maximization - 1**  
Don

61 FTE  
( ) # supervised  
Underlined is supervisor  
\* part time  
\*\* contract  
Co-located

## Business Supports

**CEO - 3**

Luanne (8)

**Exec. Office**  
Melissa  
Yolanda  
Amy P  
Don  
Peter  
Carolyn  
Tonia  
Laurie

**Accounting - 6**

Tonia (5)

Steve  
Tom  
Maggie  
Edda  
Curt

**Organizational Development - 19**

Laurie (3)

Buddy  
\*Herb

**Learning**

Trish (8)  
Sharon  
Veronica  
\* Diane  
\*\* Kelly

**Quality / Technology**

Marc (6)

Madelyn  
Jennifer  
Stan  
Angie  
John  
Brian

**Conf. Center Facilities**

Patrick  
Oscar  
Dino  
Tarah  
\* Michael  
\* Vicki

**FSRC Library**

Marci  
Brenda  
\* Diane  
\* Greyling



**What's Ahead for 2011?**

# What's Ahead for 2011?

- Pre-Referenda Activities
  - Expanded Outreach
  - Services for the Entire Community
- Continued Focus on Results and Accountability
  - Re-Release of Continuation Funding
  - Funding in Targeted Geographic Areas: Place-Based Initiatives in areas surrounding Sulphur Springs, Just, Potter Elementary

## Expanded Outreach

- Conduct public opinion polling.
- Increase outreach to community.
- “Drive” families to services.
- Seek co-branding opportunities.
- Establish grassroots volunteer base.
- Continue media outreach and advocacy.

# Universal Services for the Entire Community

- Expand Mobile Services to increase access and availability.
- Partner with other funders and seek co-location opportunities.
- Expand universal family supports.

# Continued Focus on Accountability

- Funding decisions based on data, evidence and results.
- Training in Results Based Accountability.
- Conduct annual Household Survey (needs assessment).
- Re-release continuation funding.

## Re-Release of Funding

- Invest in measureable results.
- Award funding to best providers based on data and evidence.
- Approximate 4 month process from release to award.
- Family Stability and Self-Sufficiency ITN to be released first.

## Place-Based Initiatives: Springs, Potter, Just Elementary

- Strategic goal is third grade literacy.
- Focus on readiness for school success.
- Partnership with school district and others.
- Community development/ engagement essential.
- Focus available new funds in these geographic areas.

# Acknowledgement and Appreciation

- Utilize multiple communication pathways.
- website, electronic newsletters, email
- Regular updates on CBHC activities.
- Email, monthly organizational reports
- Awards/ celebration events.

## Provider Discussion-by table

- **Question 1:** Given the changes of the past year and existing economic conditions, what can we be doing together to increase families' access to services AND awareness of CBHC in the years leading to referendum?
- **Question 2:** Please assess your table's "system". Are you familiar and coordinated with each other? How do you communicate? What are the strengths of your "system"? What are your challenges and needs? How can the CBHC assist you?
- **Question 3:** With the focus on measureable results, what activities should be undertaken to improve outcomes, better coordinate efforts and reduce duplication in targeted geographic areas and countywide?
- **Question 4:** What are your preferred methods of giving feedback to the CBHC?

# CBHC Investment Strategies

	Past	Present	Future
<b>Funding Philosophy</b>	From charity to strategic grant making	Strategic grant making	<ul style="list-style-type: none"> <li>▪ Strategic grant making</li> <li>▪ From practice-based evidence to evidence-based practice</li> </ul>
<b>Accountability</b>	From process to outcome measures (Outcomes Matrix/ Empowerment Evaluation)	<ul style="list-style-type: none"> <li>▪ Aggregate data collection</li> <li>▪ Data-based decision making (EE, cscForce, Org Capacity Assessment)</li> </ul>	<ul style="list-style-type: none"> <li>▪ Results-Based</li> <li>▪ Empowerment Evaluation</li> </ul>
<b>Impact Strategy</b>	<ul style="list-style-type: none"> <li>▪ Targeted geographic areas and populations</li> <li>▪ From intervention to prevention (Point, Success 4 Kids, Healthy Start)</li> </ul>	Universal Access in Neighborhoods  (FSRC's, Neighborhood networks)	<ul style="list-style-type: none"> <li>▪ Universal access in neighborhoods (FSRC's, Neighborhood networks)</li> <li>▪ Geographic Targeting</li> <li>▪ Promoting healthy communities</li> </ul>