



Provider Forum

5.10.11



Children's Board
HILLSBOROUGH COUNTY

Dreams Worth Growing

Agenda

- 9 a.m.** Welcome — **Herb Marlowe**
- 9:15 a.m.** Operating in Emergency
Bonnie Bush, 2-1-1
- 9:30 a.m.** Program Updates
- Response to March 7th feedback &
 - Budget and Legislative Concerns—
Amy Petrila

 - Financial Outlook and Program
Funding for FY12 —**Luanne
Panacek**
- 10:45 a.m.** BREAK
- 11 a.m.** Turning the Curve: Safe and Stable
Neighborhoods: **Kathleen Maes**
Bobbi Davis



Response to Provider Feedback



- Survey providers and create targeted email lists per provider interests (survey today)
- State and National Trends
 - CBHC website to be updated with new pages
 - Check Advocacy page for legislative updates
 - State of Florida's Child Update 2011
 - <http://www.policygroup.org/flchild.php>
- Local Trends
 - Affinity groups to meet face-to-face, via conference call or webinars
 - Reports to be generated and posted on CBHC website

Response to Provider Feedback

- **Best Practices information**
 - Check www.childrensboard.org website — new pages to be added
 - Also check Press and Publications/ Presentations, specifically April 2010 “Knowing What Works”



Online Sources of Evidence-Based Practices...

...from “Knowing What Works” Presentation, April 2010

- **Education**
 - What Works Clearinghouse (WWC) www.whatworks.ed.gov
 - Child Trends www.childtrends.org
- **Health Promotion**
 - The Canadian Best Practices Portal for Health Promotion and Chronic Disease Prevention - Public Health Agency of Canada; www.cbpp.ca
 - Communities that Care, Developmental Research and Programs www.preventionscience.com
- **Child Welfare**
 - www.promisingpractices.net/programs.asp
 - Child Welfare League www.cwla.org/programs/r2p/levels.htm
 - Strengthening Americas Families www.strengtheningfamilies.org
- **Mental Health**
 - Guildford Center: www.guilfordcenter.com/provider/practices/default.htm
- **Early Child Development**
 - FPG Child development Institute at University of North Carolina at Chapel Hill www.fpg.unc.edu
 - www.nectac.org/topics/evbased.asp
- **Youth Development**
 - <http://guide.helpingamericasyouth.gov/default.htm>
 - www.colorado.edu/cspv/blueprints

Some Other Handy References

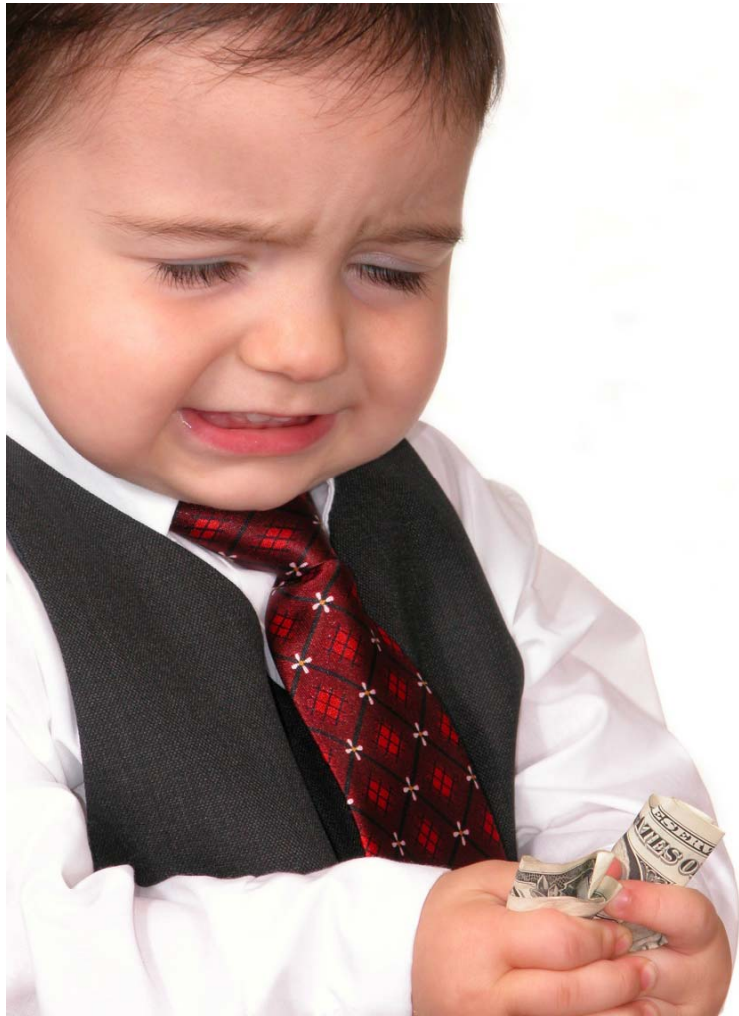
- The Journey to Evidence-Based Programming: Changing the Face of Social Services (Children's Services Council Palm Beach County – Williams-Taylor, Lisa) www.cscpb.org/cscres
- Finding the Balance: Program Fidelity and Adaptation in Substance Abuse Prevention (U.S. Dept. of Health and Human Services SAMHSA, 2002) <http://www.humaninteract.org/images/FindingBalance2.pdf>
- Center for Healthy Aging, Program Fidelity Tool (2007) <http://www.healthyagingprograms.org/resources/MaintainFidelityTool.pdf>
- WHAT WORKS, WISCONSIN <http://whatworks.uwex.edu>
- Evidence and Evaluation: Getting from Promise to Proof (The Edna McConnell Clark Foundation) <http://www.emcf.org/pub/readingroom/evaluationandevideance.htm>
- National Implementation Research Network. www.nirn.fpg.unc.edu
- The National Coalition for Evidence-Based Policy. <http://coalition4evidence.org/>
- Top Tier Evidence. <http://toptierevidence.org>

Legislative and Budget Outlook

- Least productive session on record:
2,000 bills filed; 285 passed
- Medicaid Reform passed
- Florida Retirement System changes passed
- Office of Economic Opportunity created (AWI
Office of Early Learning moves to DOE)
- \$1.3 billion reductions in education; expansion of
charter schools and vouchers
- Child Welfare: CBC Equity Formula impacts HKI
by \$1 million reduction
- Healthy Start Coalitions statewide reduction of
\$5 million
- School Readiness funding reduced in
Hillsborough by \$4.7 million; VPK also reduced
by changes in per pupil reimbursement



Legislative and Budget Outlook



- **Constitutional Amendments on 2012 Ballot:**
 - Cap on State Revenues
 - Change in property tax to reduce total annual increase in assessments of non-homestead property from 10% to 5%
 - Property tax discount for veterans injured in combat

CBHC Financial Outlook

Fiscal Year	FY 09	FY 10	FY 11	FY12	FY13	FY14	FY15
% change in ad valorem Tax Revenue	- 4.2%	- 13%	- 11.3%	-5% (est.)	0 (est.)	4.8% inc. (est)	6.4% inc. (est.)
Program Funding	3% inc.	- 4%	- 4%	-7% (est.)	-7% (est.)	-6% (est.)	TBD
Budgeted Fund Balance Spend-Down	- \$.82M	-\$3.9M	-\$5.7M	TBD	TBD	TBD	TBD

Strategic Plan Update and Program Funding: Why Now?

- **CBHC must be able to demonstrate impact.**
 - Accountability demanded by taxpayers and community.
 - Reduced revenue requires greater focus and discipline.
 - Better science now available, including evidence based and promising practices.
 - Opportunities for new and existing providers.



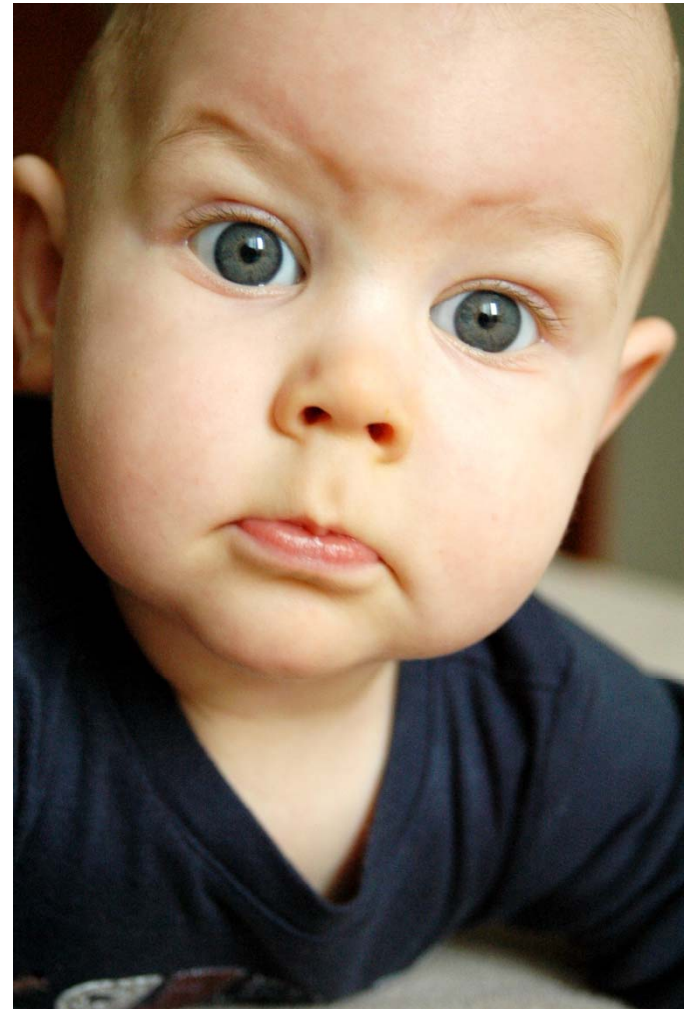
Strategic Plan Update

A system of indicators that form a “results” framework leading to a cohesive vision for child and family outcomes in Hillsborough County, Florida.



Program Funding for FY 12 (staff recommendations)

- All program funding will be awarded via a competitive grant process.
 - Notice of Funding Availability (NOFA) will be released in late summer for public comment.
 - NOFA released in early fall, no later than October 1, 2011.
 - There will be ample opportunity for community review and input into Strategic Plan and the RFP.
- Some contracts may be extended for up to 6 months.
- Some contracts may end on September 30, 2011.
- Some high quality programs will no longer be funded by CBHC.



Next Steps

For CBHC:

- Conduct annual performance review of all funded programs. Recommend programs to be extended or ended.
- Complete Strategic Plan update and obtain Board Approval—June 23, 2011
- Complete preliminary budget for FY 12—July 1, 2011
- Complete Notice of Funding Availability (NOFA) including public comment—July/August

For Providers:

Attend validation “turn the curve” discussions on May 10th, 16th, and 17th.

Respond to updated Strategic Plan and NOFA when released.

Thank You

